



University of
East London



School of Architecture, Computing and Engineering

Candidate Pack
July 2022

Welcome Message

Now is the ideal time to be joining the University of East London. We have emerged from the Covid-19 pandemic fitter, stronger and more robust. With an even greater appetite to accelerate inclusive talent by realising potential, wherever and whenever it is found, and to advance knowledge & innovation to help people and planet.

As we enter the era of Industry 5.0, we understand the need to think more holistically about what and how we teach our students and create impact in and for the communities we serve. Through our transformative 10-year strategy - Vision 2028 - we are committed to becoming the UK's leading careers-first institution, pioneering future careers and sustainable innovation for a rapidly changing world.

All our students, at every level, have access to our award-winning 'professional fitness and mental wealth' programme of emotional, social, physical & cultural intelligence and digital proficiency development. Other enhanced opportunities include the Career Passport alongside our dedicated Career Zones to ensure we bring students, industry and career specialists closer together. And all this is underpinned by our innovative Technology- Enhanced Active-Learning framework (TEAL 2028) that enhances student engagement wherever they are.

And our ambitions don't rest there. We prepare our students to be the future-proof professionals to enhance lives and contribute to a better and sustainable world. Our world-leading impact in GreenTech and HealthTech is expanded by the launch of our new Centres of FinTech, Digital Fabrication, Cyber Security and Artificial Intelligence, together with the underpinning cutting-edge education, research and enterprise. This cross-collaboration between Schools aims to widen the talent pipeline, as well as offer research, development and policy to our industry partners and neighbours. With the new Elizabeth Line operating, we are now even closer to our industry and business partners in Canary Wharf, the City and beyond.

The capital is moving east and the University, the only HE institution in London's Royal Docks Enterprise Zone, is primed to take advantage including leading on the carbon zero goal for the Docks. Our current £200 million infrastructure investment programme is only one sign of this far-reaching transformation.

The significant investment into new staff in the School of Architecture, Computing and Engineering is an exciting and valuable opportunity for ambitious and enthusiastic professionals, hungry to contribute to the University's transformation and to make a genuine and positive difference in the communities we serve. I am looking forward to receiving your application.



Professor Amanda Broderick

BA (Hons) PhD DipM DipMRS PGCTL FRSA MBGS FCIM PFHEA

**Vice Chancellor & President
University of East London**

University of East London

The University of East London is one of the most diverse and vibrant universities in the global capital. Our pioneering and forward-thinking vision is making a positive and significant impact to the communities we serve, inspiring both our staff and students to reach their full potential.

Born in 1898 to serve the skills needs of the 2nd industrial revolution, the University of East London has commenced Year 5 of its transformational 10-year [Vision 2028 strategic plan](#) led by our Vice-Chancellor & President, Professor Amanda Broderick, to advance Industry 4.0/5.0 careers-1st education. We have a clear route-map to provide a springboard for the jobs and opportunities of the future; drive diversity in the 4.0/5.0 talent pipeline - working in partnership to promote talent wherever it is found; and to create an inclusive and sustainable, green future.

Located in one of the world's most multicultural areas, our 25,000 students are a microcosm of creative diversity, representing 156 different nationalities. With London campuses in Stratford and in Royal Albert Dock, the University is at the heart of the industrial and creative shift east. The University offers specialist programmes that ensure our students have the skills, emotional intelligence and creativity necessary to adapt to a constantly evolving world and its new technologies.

As one of the most socially inclusive and international Universities and comprising one of the most diverse staff populations in the UK (50% of our professoriate identify from black or minority ethnic backgrounds), we are hugely proud of our track record in reducing inequalities (ranked 1st in the UK & 2nd globally, Times Higher Education Global Impact Rankings, 2020) and our commitment to equality, diversity and inclusion is at the heart of Vision 2028.



As the University continues to lead innovative development in cutting-edge fields, it will welcome outstanding scholars based in the UK and overseas to create an exciting future together. We are looking for inspirational individuals who have a passion to make a positive difference to people and planet, creating a more sustainable future for everyone.

We have achieved the highest 4* ranking for impact Cases across our key strategic areas of Health, Computer Sciences and Psychology in the Research Excellence Framework (REF 2021). We have also achieved 4* in research outputs in many subjects across the University. We will continue to actively engaging with domestic and international research centres, promoting interdisciplinarity and collaborative innovation, and striving to achieve major breakthrough across all our strategic subjects.

We have established strategic partnership with the blue-chip company Siemens to pioneer cutting-edge research and development in sustainability to achieve zero carbon by 2030.

We worked in partnership with Amazon web-service (AWS) to transform our learning environment to enable the University community to connect, collaborate and thrive through the digitalisation platform.

We are building an environment of success where colleagues are supported to achieve, and our community can flourish and thrive. We are an accredited Investors in People Award Institution and have achieved the Investors in People and Health and Wellbeing Award. With Athena Swan Awards and being one of a small number of Universities to have achieved the Race Equality Charter Award, we continue our journey to address and reduce barriers to opportunity.

So, if you are looking to build your career in a dynamic, inclusive, and performance-focused team and are inspired by our environment and drive for success, we want you to apply to join the University of East London. We are looking for inspirational individuals who have a passion to make a positive difference to people and planet, creating a more sustainable future for everyone.



Vision 2028

Vision 2028 is a 10-year strategy to be at the forefront of careers-led education - a springboard for the jobs and opportunities of the future.

It aims to drive diversity in the 4.0/5.0 talent pipeline to give graduates the skills, tools and competencies sought by employers and entrepreneurs in a rapidly changing world, likely to become even more relevant in an employment landscape altered by the Covid-19 pandemic.

The strategy builds upon the institution's long-standing commitment to inclusion and social mobility, and advances research and entrepreneurial knowledge to produce solutions that help people, our community, a greener planet and the sustainability of our future.

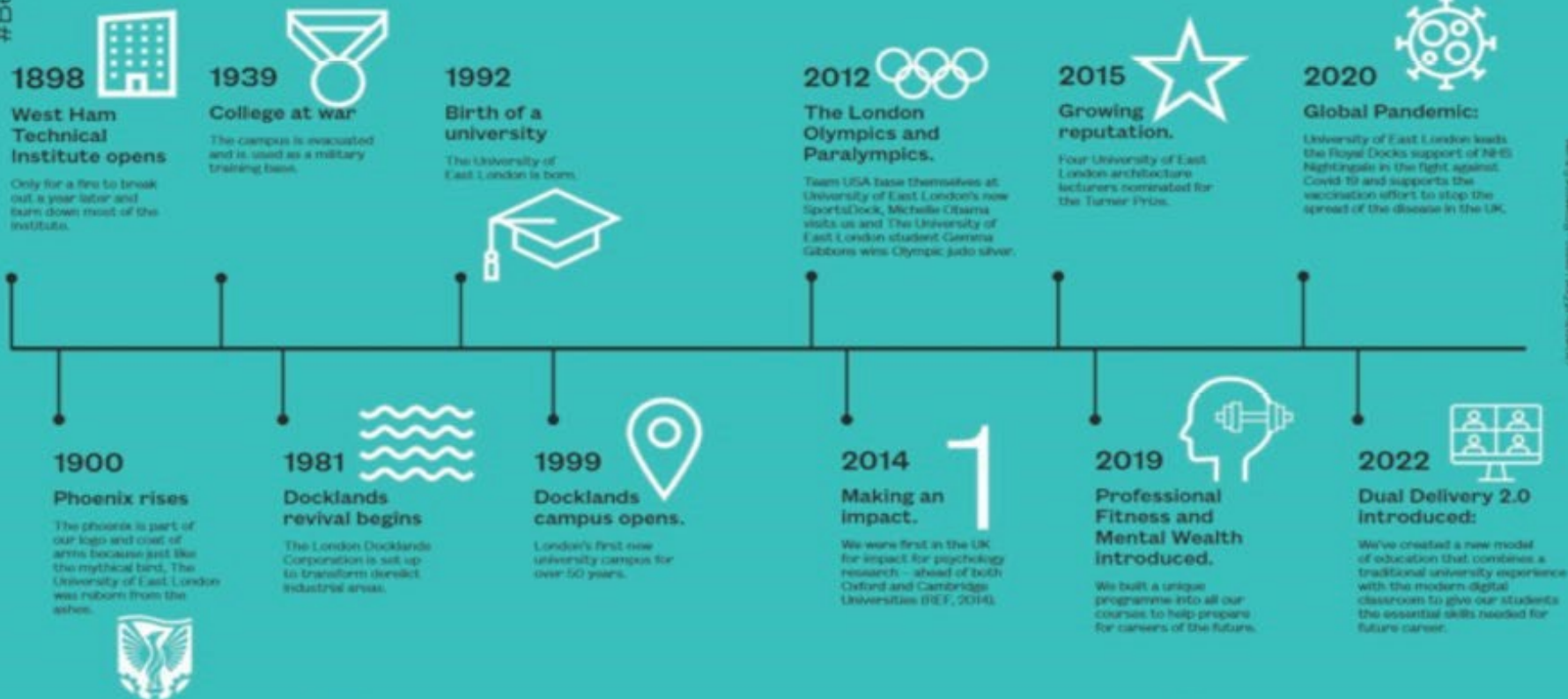
Our priorities remain resolute in our mission: driving career-ready student inclusion, increasing our reputation for the benefit of our alumni and social impact of the university.



BE PART OF OUR STORY

#BeTheChange

Our story starts in 1898. Since then, we've survived wars, celebrated momentous sporting events and fought against a global pandemic. Now we are in the digital age facing new challenges and we are consistently adapting, innovating and thriving.



University of East London - Powering Futures

ABOUT UEL

Our vision and who we are

- The University of East London recognises that the world is changing. We have a strategic Vision 2028 to be pioneers of future careers and sustainable innovation for a changing world.
- Our vision is to positively change the world as we advance knowledge and innovation to help people and the planet.
- We are ranked in the world's top 200 young universities.
- Our focus is on careers, Glocal engagement, sustainable innovation, Economy 4.0 and beyond, our EDI and health gain.
- We are signed up to the Race Equality Charter recognised by Times Higher Education.

Our careers-led positioning

- We have re-developed, re-designed and validated our portfolio with 156 programmes across the University now reflecting the needs of our learners and employer partners in a modern economy.
- We are leading the way in education through our Dual Delivery 2.0 framework, meaning more choice in the way students can study virtually and in person. We've transformed our processes to give our students careers-first learning, increased flexibility and ongoing personal support. This includes investing £20m in 2020/21 on the Digital First and Connected Campus programmes (including CRM, Cloud, Wifi, IT infrastructure, IT applications and IT equipment) to support and enhance a better student experience, in addition to £6m invested on estates and IT infrastructure in 2019/20.
- We have developed innovative programmes including embedding mental wealth and professional fitness modules as mandatory throughout our undergraduate curriculum, which is industry-focused and aligned to the jobs of the future.
- We have developed a range of extra career experience opportunities in the form of a career passport for student to add to their skills and CV alongside our dedicated career zones to ensure we bring students, industry and career specialists closer together.

OUR CORE VALUES

**PASSION IS AT
THE HEART OF
LEARNING
COURAGE WILL
ENABLE US TO
EXCEL
DIVERSITY IS
A SOURCE OF
STRENGTH**



**BY CREATING COURSES GEARED
TOWARDS INDUSTRY, OUR GOAL
IS TO BE THE UNIVERSITY THAT
PREPARES PEOPLE FOR THE
CAREERS OF THE FUTURE.**



**ALLIED &
PUBLIC HEALTH
PROFESSIONS**



**CONSTRUCTION,
TRANSPORT &
LOGISTICS**



MEDICAL SCIENCES



**ARCHITECTURE &
PHYSICAL DESIGN**



EDUCATION



NURSING



**ART &
DESIGN**



ENGINEERING



**PERFORMING
ARTS & CREATIVE
PRODUCTION**



**BUSINESS MANAGEMENT,
ENTREPRENEURSHIP
& FINANCE**



FASHION



**PSYCHOLOGY,
COUNSELLING
& WELLBEING**



**SOCIAL &
COMMUNITY WORK**



**LAW, POLICING
& JUSTICE**



SPORT



**COMPUTER
SCIENCE & DIGITAL
TECHNOLOGIES**



**MEDIA &
JOURNALISM**

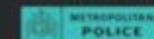
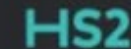
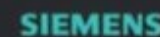
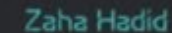
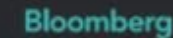
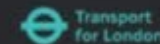
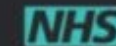


**TOURISM,
HOSPITALITY
& EVENTS**



**GLOBAL
DEVELOPMENT**

**WE WORK
WITH INDUSTRY**



School of Architecture, Computing and Engineering

The School of Architecture, Computing and Engineering is an award-winning, multidisciplinary hub that offers a transformational education built on outstanding applied research and supportive stakeholder relationships that shapes the lives of our communities locally and globally. The School has a proud history of offering industry driven and career-focused vocational courses, from architecture, art and design, computing and digital technologies, construction and surveying, to a range of engineering disciplines. Over the past 124 years, the School has produced tens of thousands of graduates of a very diverse background, with an estimated over 15,000 professionals currently playing key roles in industry and businesses, making significant contribution to national economies in the UK and across the world.

As we enter the era of Industry 5.0, we are passionate about equipping our students with the knowledge, skills and intelligences required to advance careers and lives, so that they are well prepared to contribute to building a better and sustainable world and become sought after by employers for future-proof jobs.



In the National Student Survey (NSS) 2022, our BSc Architecture and BA Interior Design courses scored top in the country for overall student satisfaction; whilst our computing courses were rated amongst the very best nationally for “the teaching on my course.” We undertake impactful applied research and ensure our students gain transferable skills to develop their full potential. All 4 Units of Assessment in the School achieved world leading (4*) outputs in the Research Excellence Framework (REF) 2021, with 100% of our Computer Science team’s outputs (GPA 3.25) being rated as internationally excellent or world leading.

Resolutely *en route* to the destination of the University’s Vision 2028 strategy, the School is going through an exciting period of continued growth and diversification. Part of this growth includes a range of new appointments that we are seeking to make to add to our creative, dynamic, and ambitious team.

If you are an ambitious and creative individual who shares our vision and wants to work for a like-minded university, now is the perfect opportunity. I look forward to receiving your application.

Professor David Tann

BSc (Eng) MSc PhD CEng FICE SFHEA FRSA

Dean

School of Architecture, Computing and Engineering

Current Opportunities:

Associate Professor/ Professor in Electrical and Electronic Engineering

Senior Lecturer / Associate Professor in Civil Engineering

Senior Lecturer / Associate Professor in Sustainable Energy

Lecturer/Senior Lecturer in Electro-Mechanical Engineering

Lecturer/Senior Lecturer in Mechanical Engineering

Senior Lecturer/Associate Professor in Cloud Computing

Lecturer/Senior Lecturer in Computer Science and Digital Technologies (3 vacancies)

Senior Lecturer in Cyber Security & Networks

Senior Lecturer in Data Science